

CHARITY SALES & JOB VENTURES

CARDS FOR ALL OCCASIONS



PAPER QUILLING ART



APPLE PIE



TEA COASTERS

Job venture projects provide our trainees with unique training opportunities such as designing art projects, using equipment and tools safely, cooking, and fine motor skills. Through crafting these wonderful items, our trainees are able to showcase their potentials and creative capacities to the community!

Products are available for purchase year-round. Custom orders are also accepted. Contact us for inquiries!



CHERISH CAFE

Our in-house simulated cafe opens seasonally to serve customers in our community! This cafe provides trainees with the opportunity to develop basic job skills such as customer service, food preparation, following health and safety standards, and processing payments. Come by for some coffee and baked goods to support our trainees as they build their potentials and connect with the community!
(Hours and details can be found on our website)

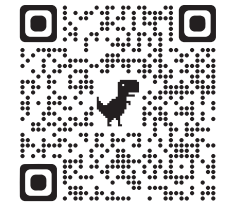


GET INVOLVED

WE NEED YOUR SUPPORT!

We welcome donations/sponsorships from individuals, foundations, businesses, and corporations! We are always open to discussing partnership or corporate giving program opportunities. Contact us for further inquiries.

Scan to donate now!



STUDENT PLACEMENT OPPORTUNITIES

We welcome students from diverse fields to gain experience and receive mentorship from our experienced staff. We accept students from programs such as Social Work/Social Service, Child and Youth Care, Nursing, Personal Support Worker, and many more! Contact us to apply.



VOLUNTEER WITH US

Volunteers play an important role at Cherish! We require support in various areas such as administration, program support, mentorship, outreach, digital/tech solutions, and many more. Contact us to apply.



*Cherish each person with Uniqueness
Integrate each life with Community*



智愛
Cherish
INTEGRATED SERVICES
For Persons with Developmental Disabilities
- A Registered Charity -
幫助智障人士成長的慈善機構
www.cherishis.org
Charitable Registration #: 81036 2061 RR0001

WHO WE SERVE

Individuals of all ages with intellectual or developmental disabilities such as Autism, Down Syndrome, Epilepsy, Learning Disabilities, dual diagnosis, etc.

Individuals with physical and motor disabilities such as Cerebral Palsy, Acquired Brain Injury, Muscular Dystrophy, Neurological Disorders, Spinal Cord Injuries, etc.



1271 Denison St., Unit 64
Markham, ON L3R 4B5

- ☎ 905.604.9290
- ✉ info@cherishis.org
- 📷 [@cherishis_org](https://www.instagram.com/cherishis_org)
- 📘 [@cherishis](https://www.facebook.com/cherishis)
- 🐦 [@cherishis_org](https://twitter.com/cherishis_org)
- 🌐 www.cherishis.org



MISSION

Cherish Integrated Service is a registered charitable organization established in 2010, aiming at providing training and support services for persons with developmental disabilities of all ages and different diagnoses. Our Mission is to enrich the quality of life and personal wellness of persons with developmental disabilities, and to enhance their individual and social functioning in daily living. We cherish each person's uniqueness and integrate each life into the community. We strive to help them realize their full potential, maximize their independence and self-reliance, and contribute their own strengths to the community.

VALUES

To manifest the spirit of love through serving people in need, we hold the CHERISH operational values and service principles:

- C**aring heart
- H**armonious relationship
- E**qual opportunity
- R**espect for human dignity
- I**ndividualized planning
- S**tructured teaching
- H**olistic approach



PROGRAMS

After School Programs

ADULT PROGRAMS

- Daily Living Enrichment Program
- Saturday Social Club
- Job Venture & Vocational Training
- Group Living Adaptation Program



CHILDREN PROGRAMS

- Kids Link Social Club
- Children Interest Classes
- Parenting Support & Counselling
- Parents Talks & Seminars
- Children Social & Therapeutic Groups



Holiday Clubs

YOUTH PROGRAMS

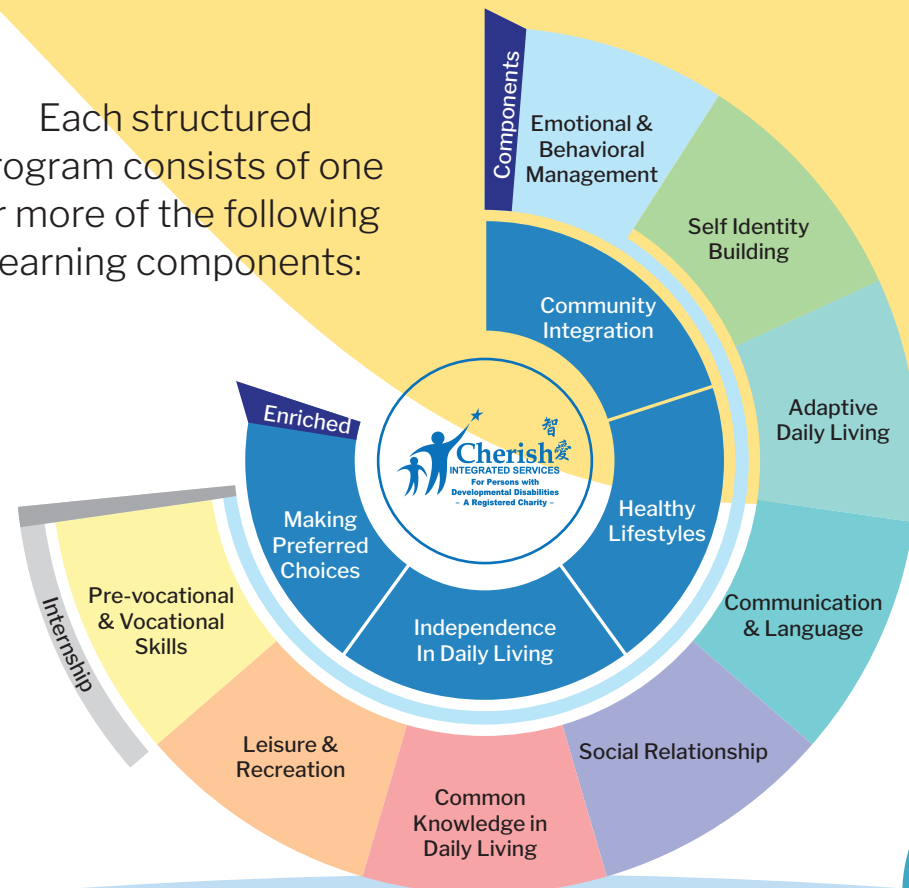
- Youth Connect
- Mentorship Projects
- Volunteer Projects
- Youth Counseling



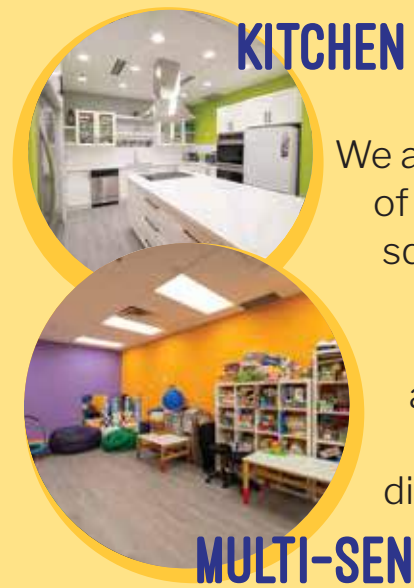
STRUCTURED TEACHING

We adopt the TEACCH Structured Teaching Approach which offers consistent patterns, procedures, and visual cues to help trainees focus on specific tasks while fostering independence. The use of daily structured routines creates predictable expectations, making it easier for trainees to achieve their goals. This encourages trainees to make preferred choices and engage meaningfully with the community.

Each structured program consists of one or more of the following learning components:



Personal Growth Program (1 on 1 service)



KITCHEN



MULTI-SENSORY ROOM

RECREATION ROOM



CONFERENCE ROOM



TRAINING ROOM



OASIS



RECEPTION AREA

OUR FACILITY

We are located at Markham (intersection of Birchmount and Denison). Our 5000 sq. ft. facility was carefully designed to provide an optimal learning space for our trainees. The center features a barrier free entrance, an accessible washroom, and various rooms for diverse types of development training.

FOR PROGRAM DETAILS PLEASE VISIT OUR WEBSITE AT WWW.CHERISHIS.ORG

慈善義賣及 工作體驗項目

各種節日賀卡

紉縫紙藝術

蘋果批

茶杯墊

我們的義賣及工作體驗項目為學員帶來獨特培訓機會例如在藝術創作、工具和設備安全操作、烹飪、及精細手部操作技能等。透過這些手藝，讓學員能夠向社會人士展示他們的潛力和創造能力！

歡迎大家的支持，選購和訂製我們學的製成品，如有查詢請聯絡我們。

智愛咖啡店

我們的模擬教學咖啡店會季節性開放為社區提供服務。我們希望透過模擬的學習計劃讓學員能夠增強多方面的技能如：客戶服務、料理、營養、食物安全及找續及金錢處理方法等等。歡迎來臨智愛咖啡店品嚐一下我們的咖啡和烘焙食品，並支持我們的學員，幫助他們發揮潛力與貢獻社區！

(有關開放時間和詳情請到智愛網站查詢)

支持我們!

我們需要你的支持!

誠邀你與我們攜手，透過個人及各種基金會、企業和公司的贊助或捐款，支援我們學員的成長及學習! 我們歡迎不同構思的合作或伙伴提議。如果你有興趣成為我們的合作夥伴，歡迎與我們聯絡!

立即掃描去
捐款啦!



INTEGRATED SERVICES

For Persons with
Developmental Disabilities

- A Registered Charity -

幫助智障人士成長的慈善機構

www.cherishis.org

Charitable Registration #: 81036 2061 RR0001

珍愛獨特每個人
融合生命全社群

學生實習計劃

我們歡迎不同大學及其他院校內有關專學科的學生實習工作，讓你從經驗豐富的智愛員工身上獲取經驗及指導。我們接受來自Social Work, Social Service, Child and Youth Care, Nursing, Personal Support work 等學生實習工作！歡迎聯絡我們！

義工團隊

義工在智愛擔任一個非常重要的角色！我們在多方面都需要你的幫助，包括在行政文書、課堂協助、推廣活動、科技支援，教具製作等。你的義助能延展我們的力量，服務更多有需要人士！如有興趣加入智愛義工團隊，歡迎聯絡我們！

我們的服務對象

不同醫療診斷的智障人士兼其他診斷如唐氏綜合症、自閉症、腦癱症學習障礙等。

患有體能障礙的人如大腦痙攣、大腦受創引致智障、肌肉萎縮、先天性缺陷、脊椎神經受創及多類障礙等。

1271 Denison St., Unit 64
Markham, ON L3R 4B5

☎ 905.604.9290

✉ info@cherishis.org

📷 @cherishis_org

📘 @cherishis

🐦 @cherishis_org

🌐 www.cherishis.org



我們的宗旨

智愛中心於2010成立，為安省註冊慈善社會服務機構，專為任何年齡及診斷的智障人士提供訓練及支援服務。我們的宗旨是為智障人士豐盛其生活質素和個人安康，以及增強其個人社群功能運作。我們珍愛每個人的獨特性，讓個人生命融入全體社群生活裏。我們致力協助他們實現個人的天賦才能、全力發展其獨立生活能力和自信、從而為社會貢獻出一分力量。

我們的訓練模式及理念

我們採用結構式教學法，提供貫徹的模式、以常規、程序和視覺提示，幫助學員減少焦慮，專注學習，同時培養獨立性及自信心。結構化的常規能夠幫助學習適應轉變，建滿立訓練習慣，循序漸進地讓學員達成所訂立的訓練目標並得到鼓勵。而視覺提示有助學員理解及溝通，在日常生活中，替自己作出選擇和與社區進行有意義的互動。

中心設施

中心位於萬錦市Birchmount及Denison交界，我們五千方尺的設施全都經過精心設計，為我們的學員提供最佳的學習空間。中心設有無障礙入口、無障礙洗手間和因應不同培訓需要的課室。



廚房



多感官室



娛樂室



會議室



訓練室



Holiday Clubs



後花園



接待區

我們的價值

我們本著彰顯仁愛精神去服務有需要的人，智愛中心堅持以下各項運作價值及服務原則：

- 愛心
- 和諧人際關係
- 平等機會
- 尊重個人尊嚴
- 個別能力發展導向
- 結構式教學
- 及全面發展計劃



成人課程

- Daily Living Enrichment Program
- Saturday Social Club
- Job Venture & Vocational Training
- Group Living Adaptation Program

課程

After School Programs

兒童課程

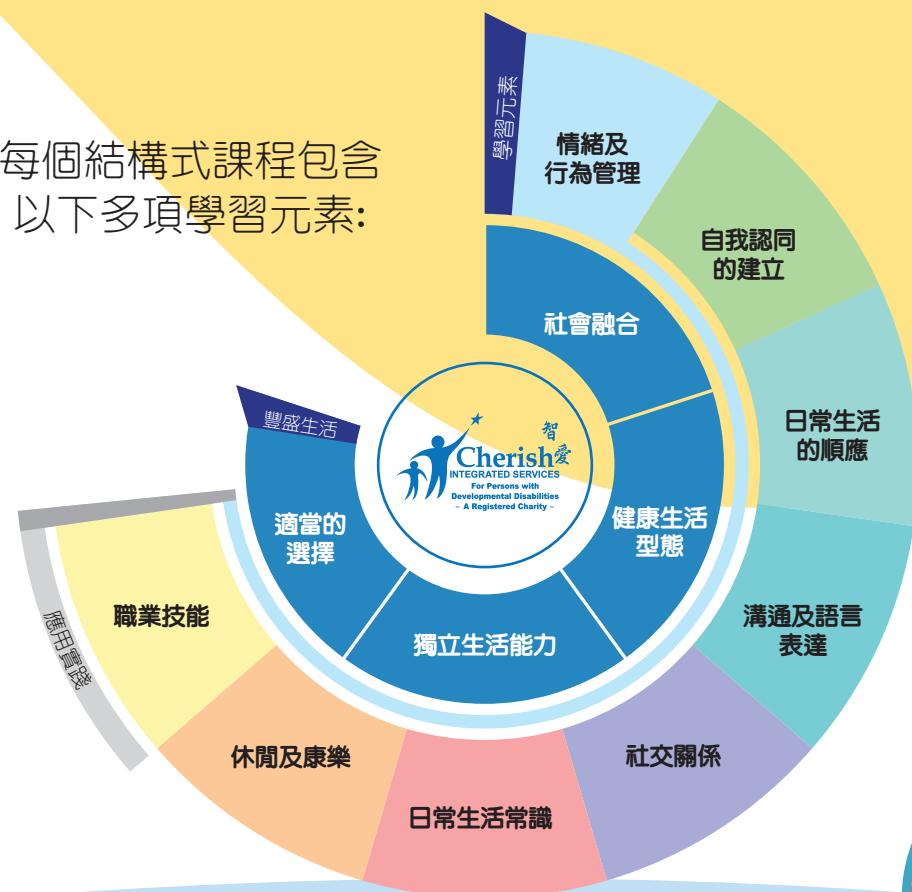
- Kids Link Social Club
- Children Interest Classes
- Parenting Support & Counselling
- Parents Talks & Seminars
- Children Social & Therapeutic Groups

青年課程

- Youth Connect
- Mentorship Projects
- Volunteer Projects
- Youth Counseling

有關課程時間和詳情請到智愛網站 WWW.CHERISHIS.ORG 查詢

每個結構式課程包含以下多項學習元素：



Personal Growth Program (1 on 1 service)